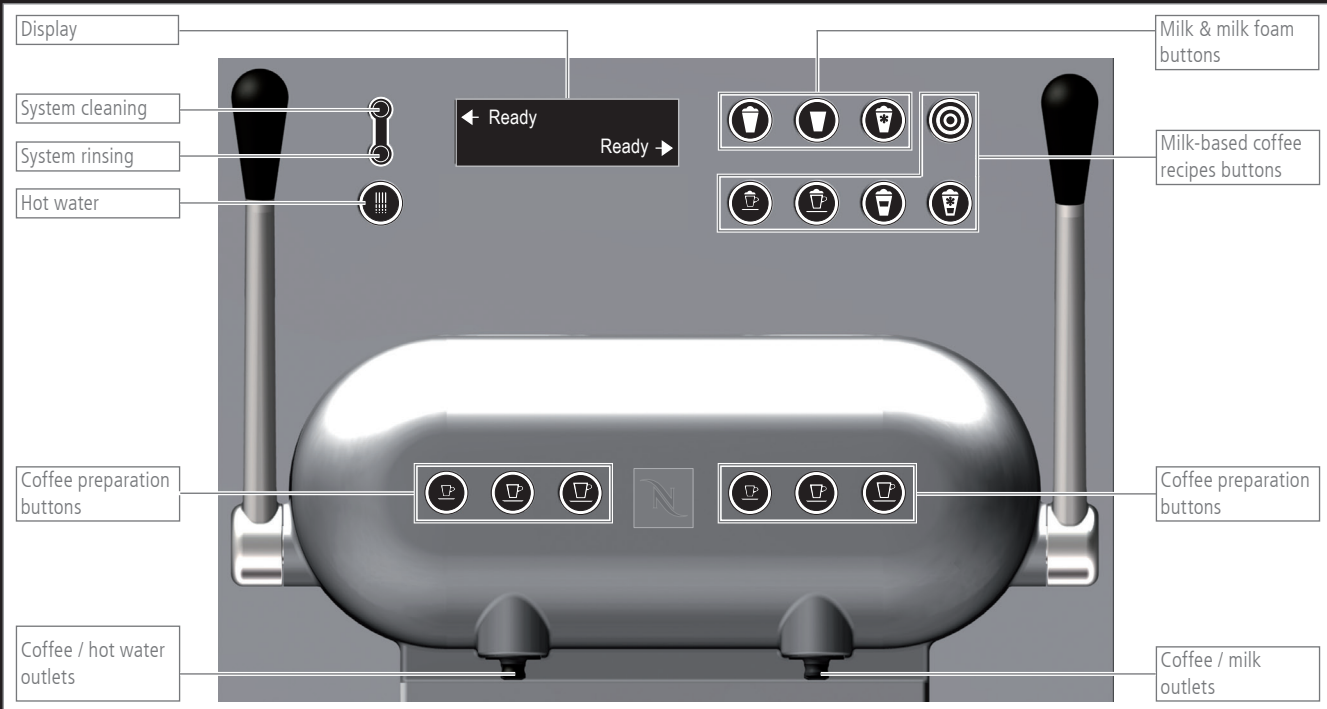
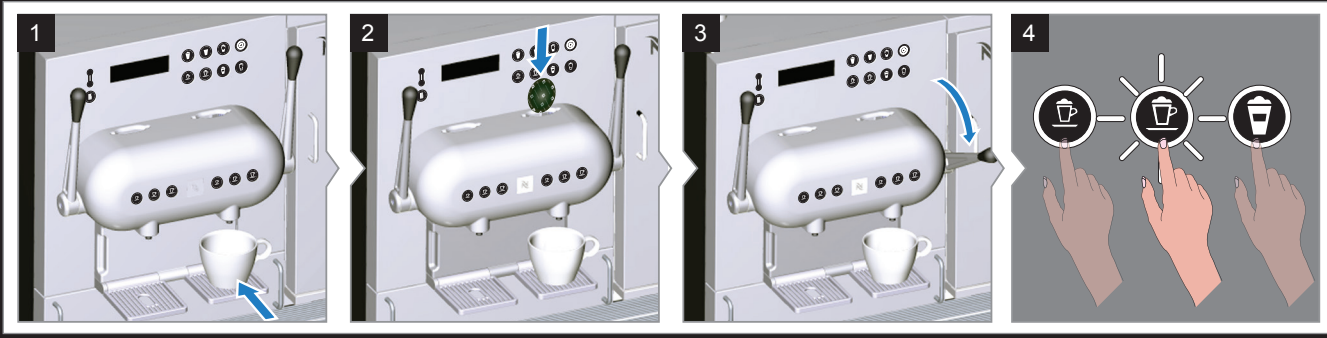


Operating overview



Beverage preparation



Nespresso Grand Cru Recommendation

	Ristretto Intenso	Ristretto Origin India	Ristretto	Espresso Forte	Espresso Leggero	Espresso Origin Brazil	Lungo Origin Guatemala	Lungo Forte	Lungo Leggero	Espresso Decaffeinato	Lungo Decaffeinato
Ristretto											
Espresso											
Lungo											
Espresso Macchiato											
Cappuccino											
Latte Macchiato											
Iced Macchiato											

For more Nespresso Grand Cru Recommendations please refer to the User Manual.

The machine daily cleaning is mandatory for maintaining high hygiene standards, ensuring neutral in-cup taste throughout time and for prolonging the machine life-time.

External cleaning

Remember to regularly inspect and, if necessary, clean the exterior of the machine.

Use a damp cloth or sponge soaked in a soap solution. Cloths and sponges must be wrung out thoroughly to ensure they are only moist, not wet, otherwise there is a risk of electric shock.

Only use mild detergents and non-scratch cloths.

Pay particular attention to the product dispensing parts. The display and keyboard must be cleaned with particular care.

Internal cleaning

Follow these instructions carefully to run the automatic cleaning process.

i The display will show a reminder with a timer 2 hours before cleaning is required.



CAUTION



Risk of corrosive injury

Direct contact with cleaning detergent with eyes may cause injury.
Clean your hands after handling cleaning tablets.
Wear gloves/goggles.



CAUTION

Risk of scalding

After the cleaning procedure, remaining hot water may drop from product outlets.
Avoid direct contact with hot water.
Protect hands from scalding.



NOTICE

Cleaning solutions

The use of inappropriate cleaning solutions may damage parts of the machine or may lead to improper cleaning efficiency.

Use only ThermoPlan milk cleaning tablets to perform the automatic cleaning.

