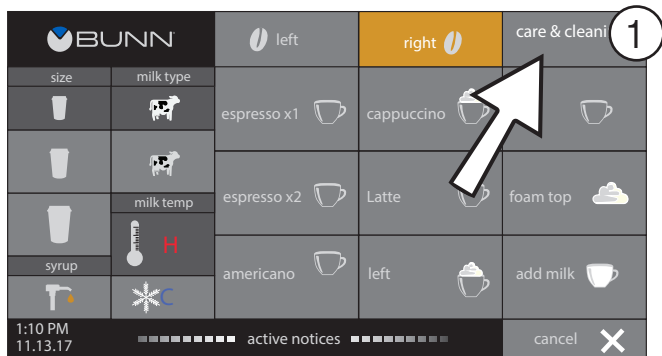
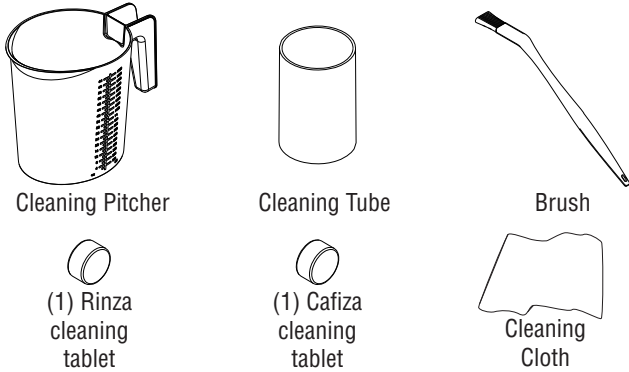
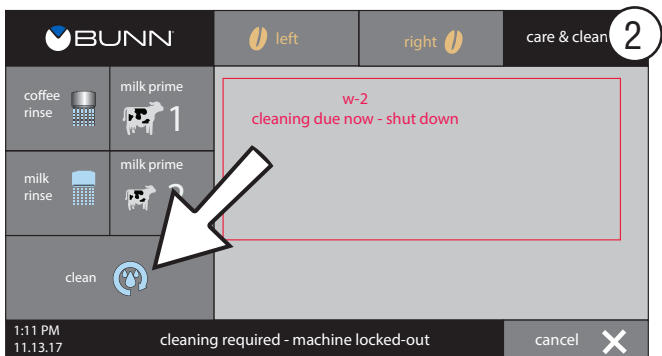


Required Equipment:



Locate and press the “care & cleaning” tab at the top right corner of the screen.



Locate and press the “clean” tab at the bottom left corner of the screen.



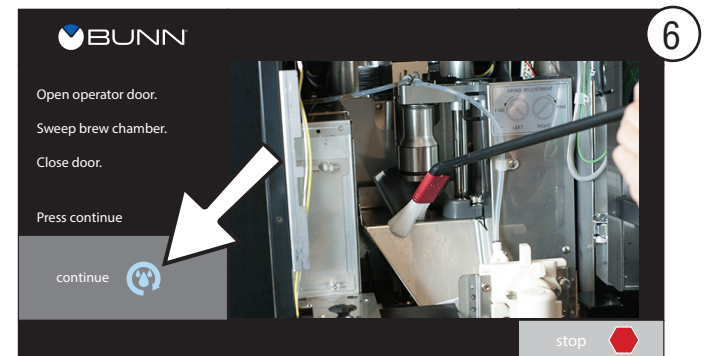
Place empty cleaning pitcher under the dispense head. Then press the “continue” button and wait for unit to complete “Dispensing water - Please wait”



Insert tubes in pitcher. Tips must touch bottom. Place pitcher in the fridge. Then press the “continue” button and wait for unit to complete “Rinsing milk tube - Please wait”



Add 1 Rinza milk cleaning tablet, then press “continue”.



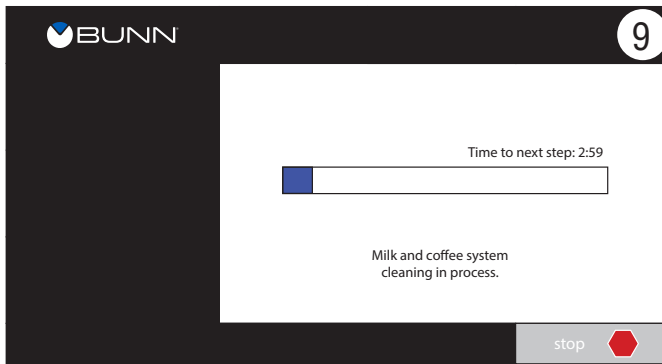
Open operator door. Sweep brew chamber. Close door. Then press the “continue” button.



Insert the Cafiza cleaning tablet into chute at top of machine. Then press the “continue” button.



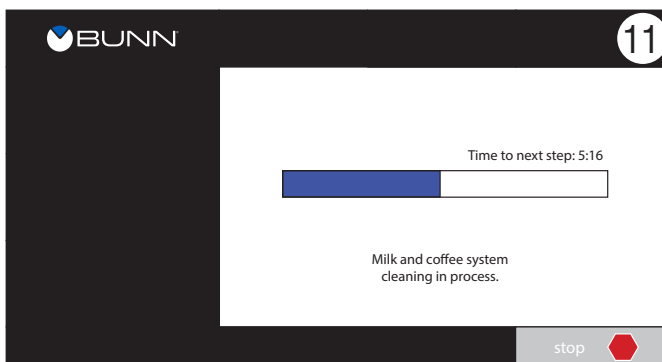
Position cleaning tube under dispense tips. Then press the “continue” button.



Wait approximately 3 minutes for the milk and coffee system cleaning process to complete.



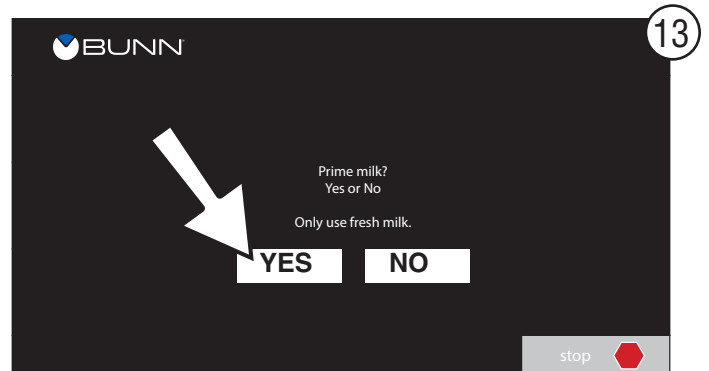
Empty and rinse pitcher. Add 64 oz. (2L) minimum 185° F (85° C) water. Reinsert tubes. Place pitcher into the fridge. Then press the “continue” button.



Wait approximately 5 minutes for the milk and coffee system cleaning process to complete.



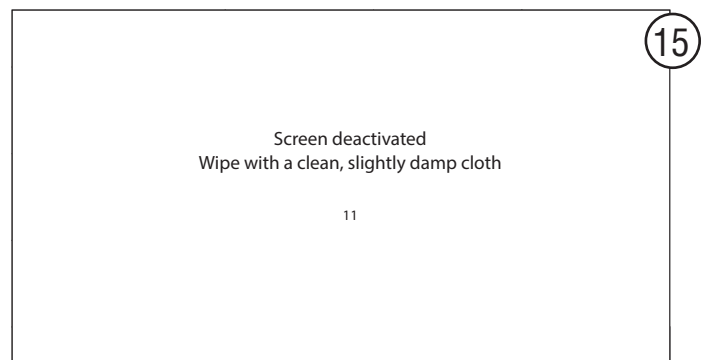
Empty pitcher. Wipe interior of fridge. Wipe the milk tubes with a clean cloth slightly damp with sanitizer. Then press the “continue” button.



Do you want to prime milk? Then press “yes” or “no” button to continue the process.



Empty and clean the puck bin. Wash the drip tray grate. Clean drip tray with a damp cloth. Reinstall puck bin and drip tray grate. Then press “continue” button.



Screen will be deactivated for 15 seconds. Wipe with a clean, slightly damp cloth.