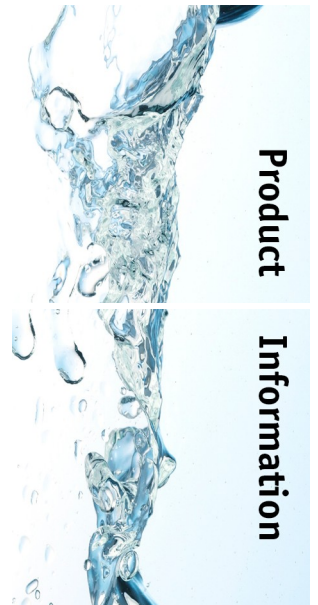


Nio 20.3 [a] CoEx® bean2cup double bean



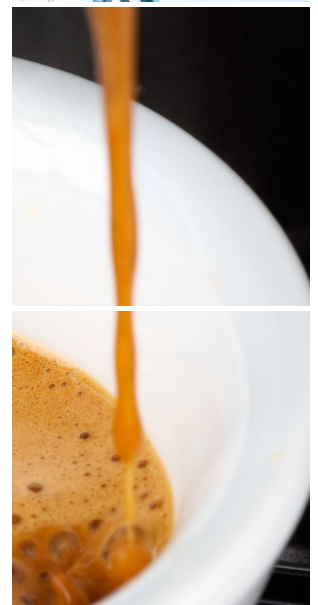
reddot award 2014
winner

Key features

- Visible beans & ingredient canisters
- CoEx® brewer & 2 whole bean grinders
- 10.4" high res full color touch screen
- Keyless cleaning & operation
- Aluminum housing
- LED illuminated ingredient canisters
- Separate hot water outlet

Options

- Branding and/or customized colors
- On-screen communication options
- Connect.Me® [online monitoring]
- Base cabinet [with condiment trays]
- Increased capacities
- Waste guide & drain
- Table between base and machine



Nio 20.3 [a] CoEx® bean2cup double bean



Dimensions

	inch
Machine	h 23.6
	w 18.1
	d 21.3
Base Cabinet	h 33.5
	w 18.1
	d 21.3
Weight	77 lb

Selections

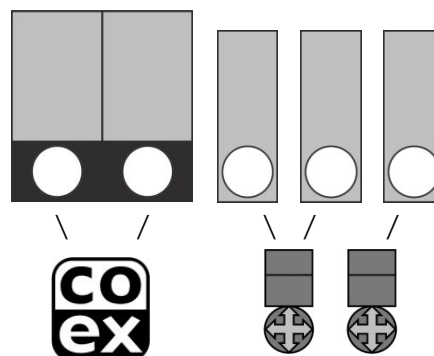
Whole Bean Coffee I	Hot Chocolate
Espresso	Chocomilk
Double Espresso	Espresschoc
Whole Bean Coffee II	Cappuccino I
Espresso II	Cappuccino II
Double Espresso II	Cafe au Lait
Latte Macchiato	Cafe Latte
Customized recipes **	Sugar
Chilled (sparkling) water **	Hot water

** optional, ask for details & conditions

Specifications

- MoVeC-ICEq® & USB upload
- 10,4" resolution : 800x600
- User Interface : DJD/Nio
- Menu structure or direct start
- Connection for payment systems [MDB]
- Multiple languages possible
- Cup-sensors
- Strength selections menus
- Number selection
- Boiler : 2x 0.4L
- Pressure : max 12 Bar

Canisters



Connections

- 100-120 Volt AC
- 50/60 Hz
- 1200 Watt
- ¾" BSP [15 mm] mains waterfilter & waterlock recommended
- USB [outside access]
- LAN or Wifi

Capacities

	#	Size	lbs	Cups
Whole Bean Coffee I	1	189	2.43	150
Whole Bean Coffee II	2	-	2.43	150
Chocolate	3	63	2.78	55
Milktopping	4	63	1.79	160
Sugar	5	63	3.24	245

Waste bucket [accessible from outside] ≥ 100
(number of cups may vary depending on settings)

