

BUNN® TECHNICAL TRAINING

Serenade™



Operations

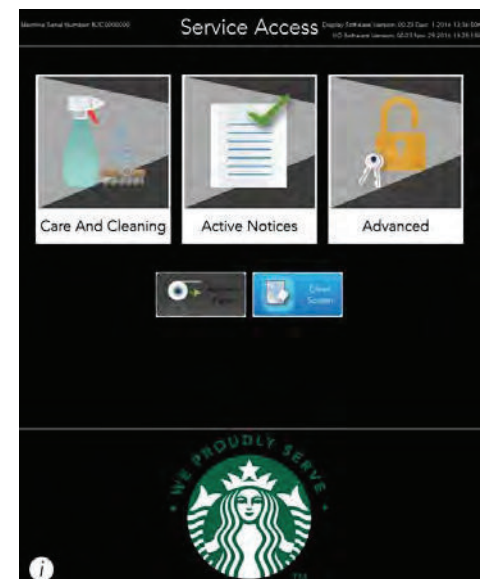
Cleaning the Serenade™

The Serenade™ has two options for maintaining the machine: Rinsing and Cleaning. To access these options, perform the following:

Press and hold the upper right corner for 5 seconds



Select the Care and Cleaning Tab



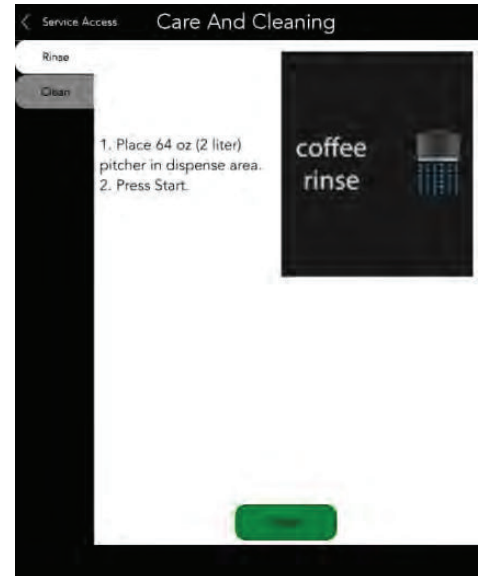
Operations

Rinsing

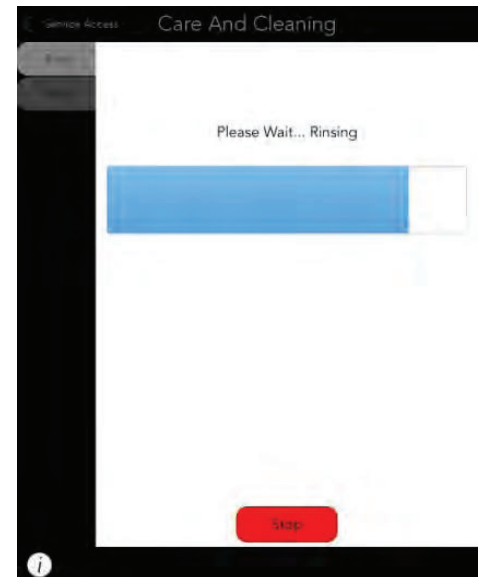
This process passes hot water through the funnel, without any coffee grounds present. This should be done once a day, or more frequently based on volume, to help preserve flavor and the longevity of the machine.

To start a rinse cycle:

1. Place a 64oz pitcher under the spout
2. Press the green start button



The rinsing process will start, and display a progress bar. When complete, the screen will cycle back to the first screen

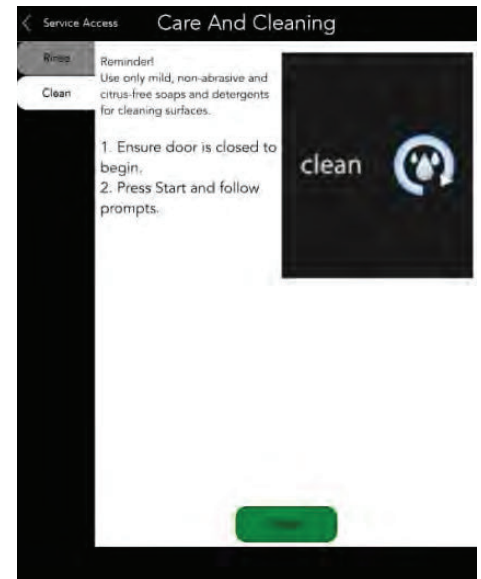


Operations

Cleaning

The Serenade™ needs to be cleaned once every 7 days. This process uses cleaning tablets and hot water to break down and remove oil build up and deposits in the coffee system.

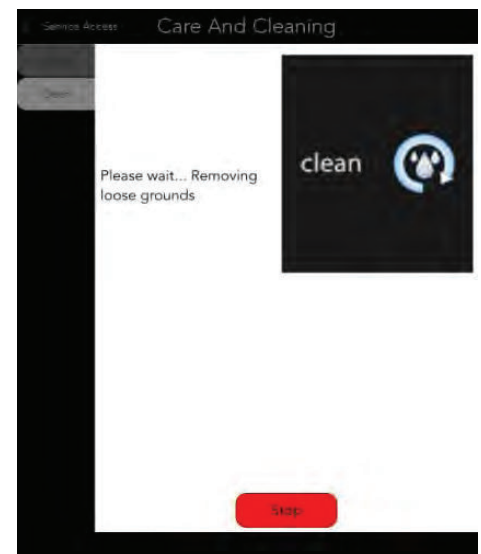
To start a cleaning cycle, select the Cleaning tab from the first screen, and press the green start button.



When prompted, open the door and clean any excess grounds from around the chute into the funnel. Close the front door then press the green Continue button

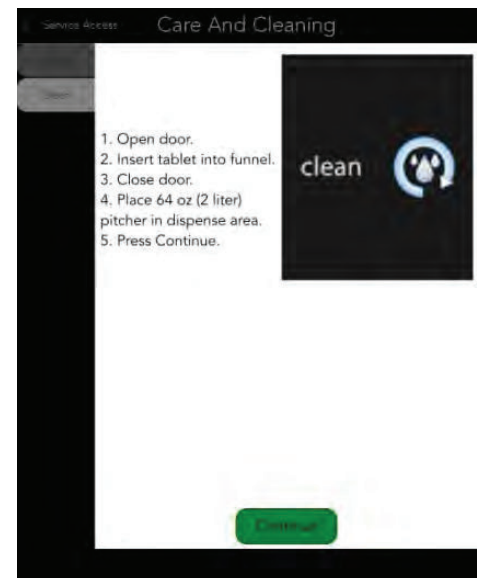


The machine will now dispense hot water through the funnel, to rinse the grounds swept in the previous step

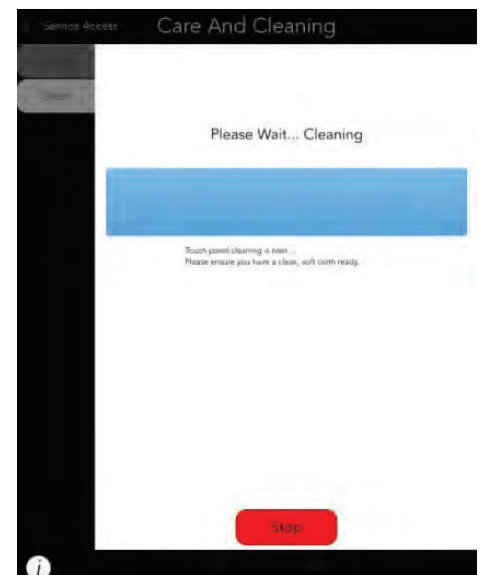


Operations

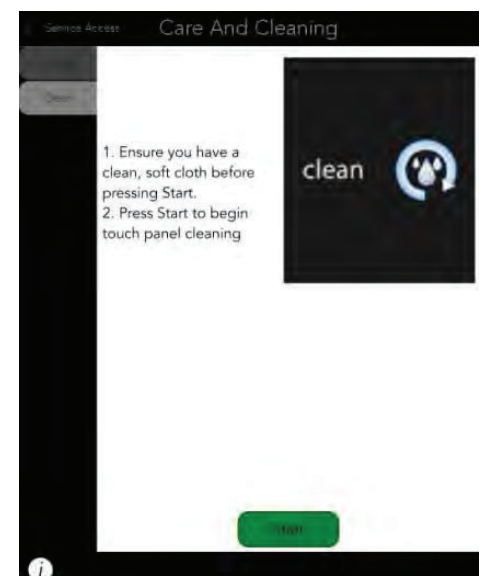
Open the front door and place a cleaning tablet into the funnel. Close the door and place a 64oz pitcher under the dispense spout. Press the green continue button.



The machine will now complete the cleaning cycle by passing hot water over the tablets in the funnel, dissolving them. This creates a cleaning solution designed to break up the oil residue created in the coffee making process. A status bar will indicate the cleaning cycle progress on the screen.

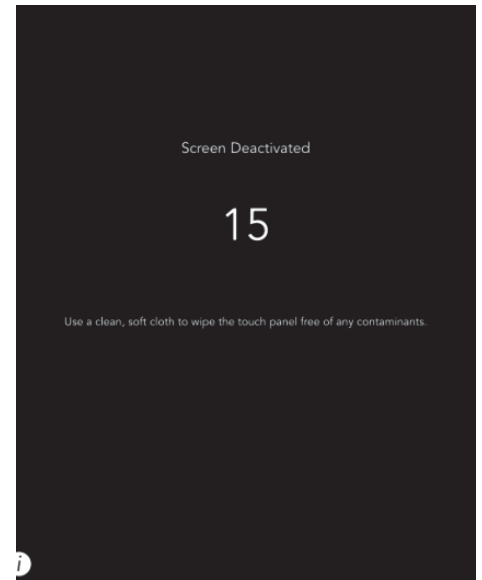


At the end of the coffee cleaning cycle, the operator will be given the opportunity to wipe the touch panel display down without activating any buttons. Press the green Continue to start this process



Operations

Using a clean cloth, wipe the touch panel free of any contaminants. The screen will be deactivated for 15 seconds to complete this action



The cleaning cycle is now complete.